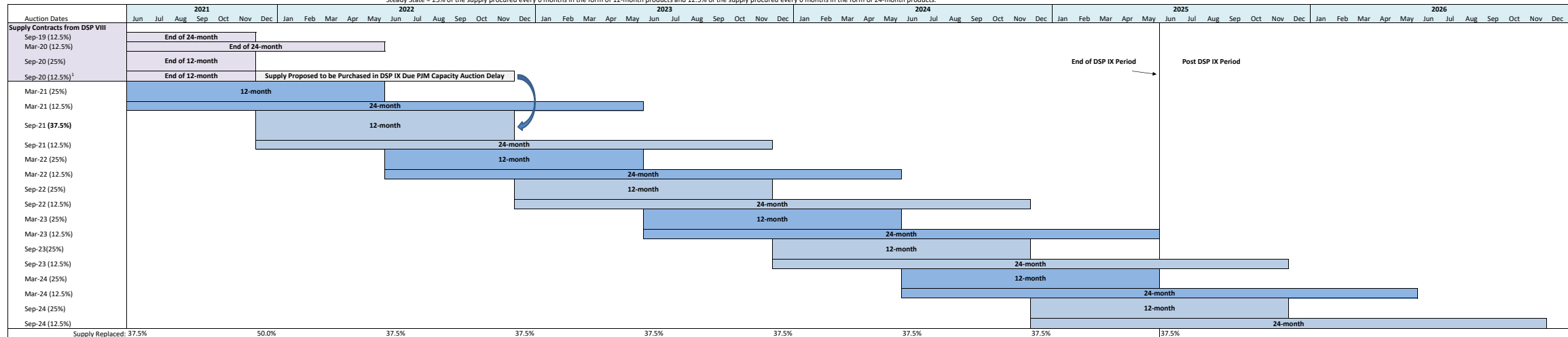


DSP IX Plan for the Residential & Lighting Class

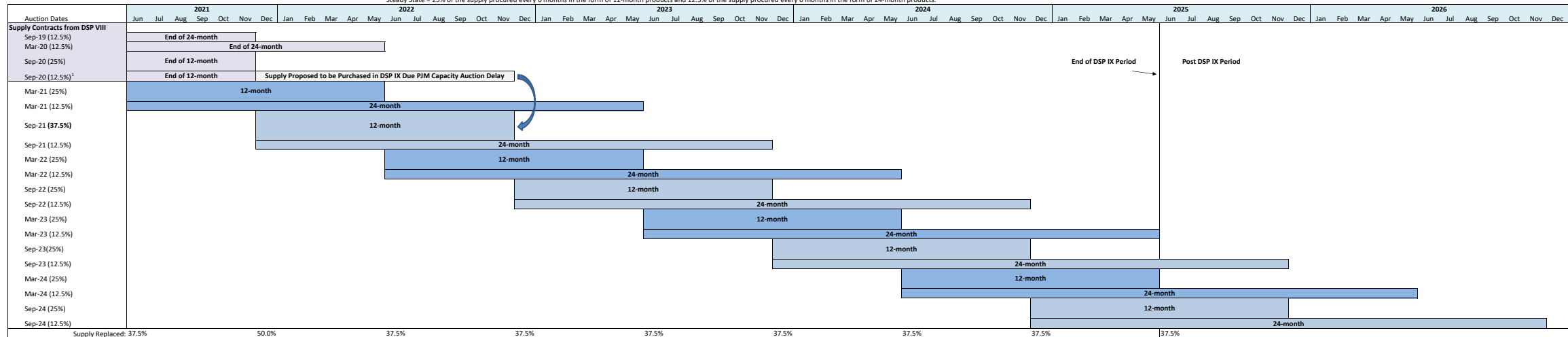
Steady State = 25% of the supply procured every 6 months in the form of 12-month products and 12.5% of the supply procured every 6 months in the form of 24-month products.



Supply rates adjust every six months.
 If the PaPUC at any time decides that DLC no longer will be the default service provider after the DSP IX period, then DLC will file a petition to amend the DSP IX plan so that no yet-to-be solicited products extend beyond the date in which DLC terminates its role as the default service provider. Existing contracts previously signed with a supplier will not be altered.

DSP IX Plan for the Small C&I Class

Steady State = 25% of the supply procured every 6 months in the form of 12-month products and 12.5% of the supply procured every 6 months in the form of 24-month products.



Supply rates adjust every six months.

If the PaPUC at any time decides that DLC no longer will be the default service provider after the DSP IX period, then DLC will file a petition to amend the DSP IX plan so that no yet-to-be solicited products extend beyond the date in which DLC terminates its role as the default service provider. Existing contracts previously signed with a supplier will not be altered.

Posted by EnergyChoiceMatters.com